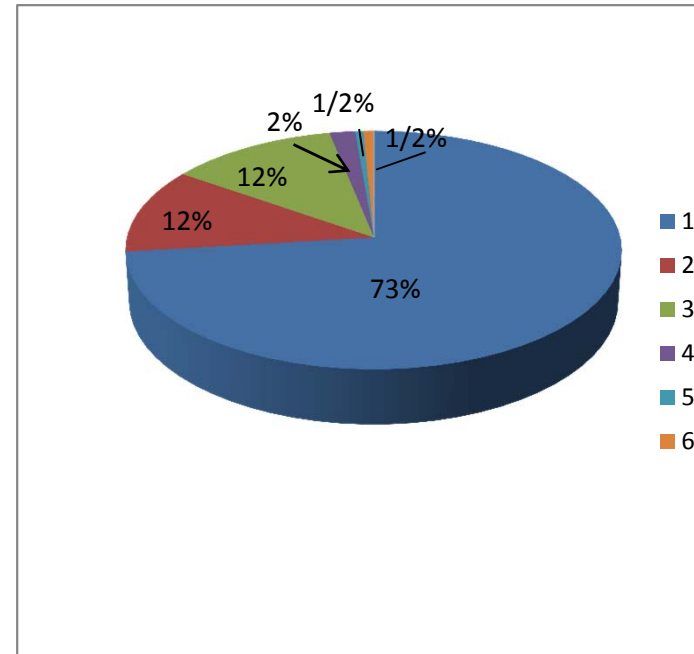


### 2010 Receipts

#### Unrestricted Receipts

1 In-kind Food Donations	\$790,075.00
2 Member Organizations	\$124,866.00
3 Supporters	\$131,237.00
4 Fund Raising Events	\$19,962.00
5 Interest	\$6,308.00
6 Grants	\$8,301.00

**Total Unrestricted (57%)**                      **\$1,080,749.00**

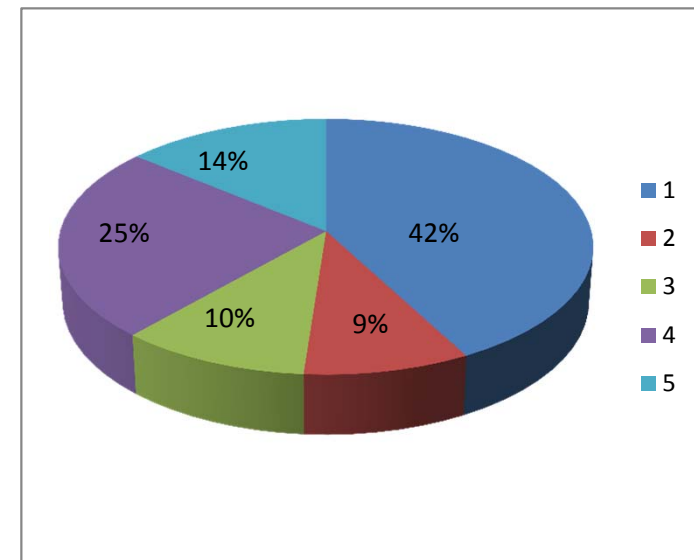


#### Temporarily Restricted Cash

1 Emergency Service Grants	\$349,424.00
2 TXU/Reliant Energy	\$74,599.00
3 Adol & Children Clinic	\$85,438.00
4 Seniors Net	\$203,196.00
5 Fundraising Events	\$115,635.00

**Total Temp. Restricted (43%)**                      **\$828,292.00**

**Total Receipts**                                              **\$1,909,041.00**



## 2010 Disbursements

### Program Services

1 Emergency Assistance	\$1,034,480.00
2 Indirect Client Services	\$317,113.00
3 Adol & Child Clinic	\$121,328.00
4 Seniors Net	\$111,848.00

**Total Program Services (84%)**      **\$1,584,769.00**

### Supporting Services

Mgmt & General	\$251,067.00
Fundraising	\$59,043.00

**Total Support Services (16%)**      **\$310,110.00**

**Total Disbursements**      **\$1,894,879.00**

